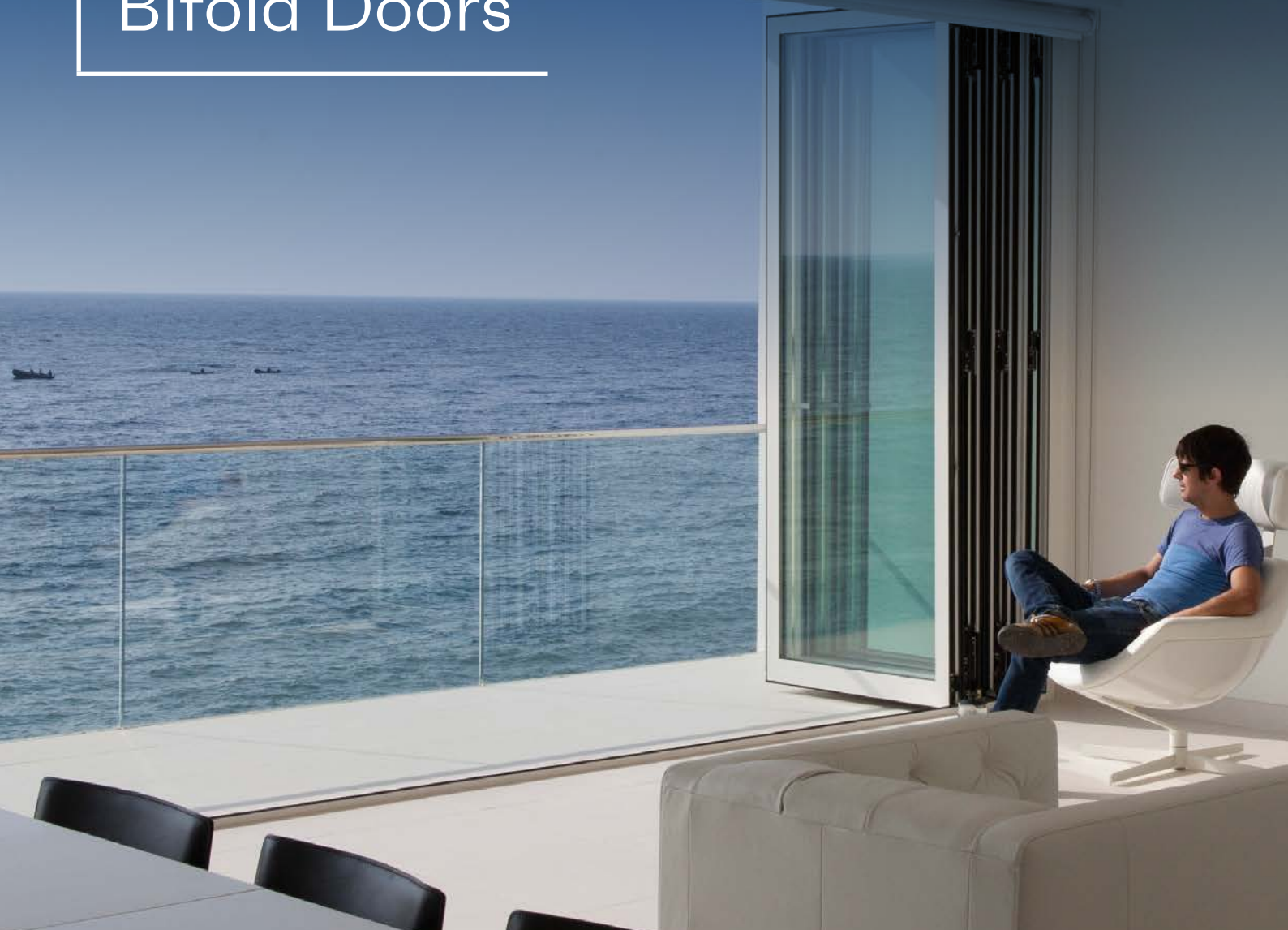


CF 68 Bifold Doors



Bifold doors, or folding sliding doors if you prefer, are a modern and innovative design statement that can transform an ordinary room and make it a feature of the house.

These doors can flood the room with natural daylight and open up the house to the garden, letting the outside in.

Bifold doors have been hugely popular in the UK for a number of years. The CF 68 benefits from years of experience, research and development.

The result is a stylish-looking product that combines industry-leading performance with smooth and reliable operation.



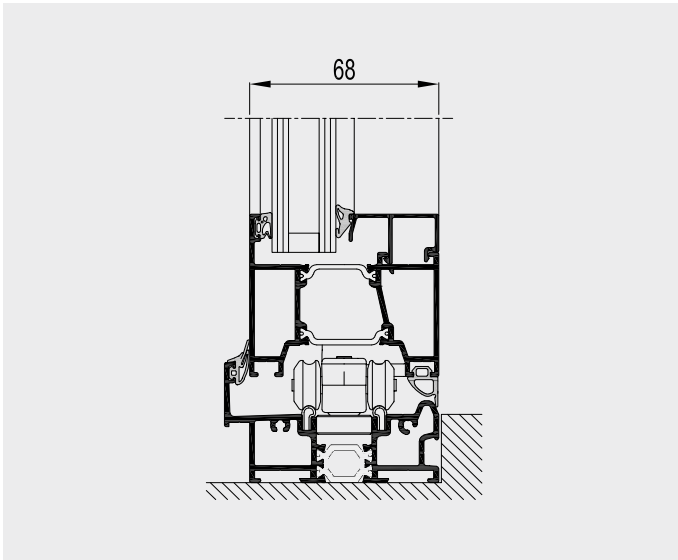
Reynaers
at Home

www.reynaersathome.co.uk

Versatile design options

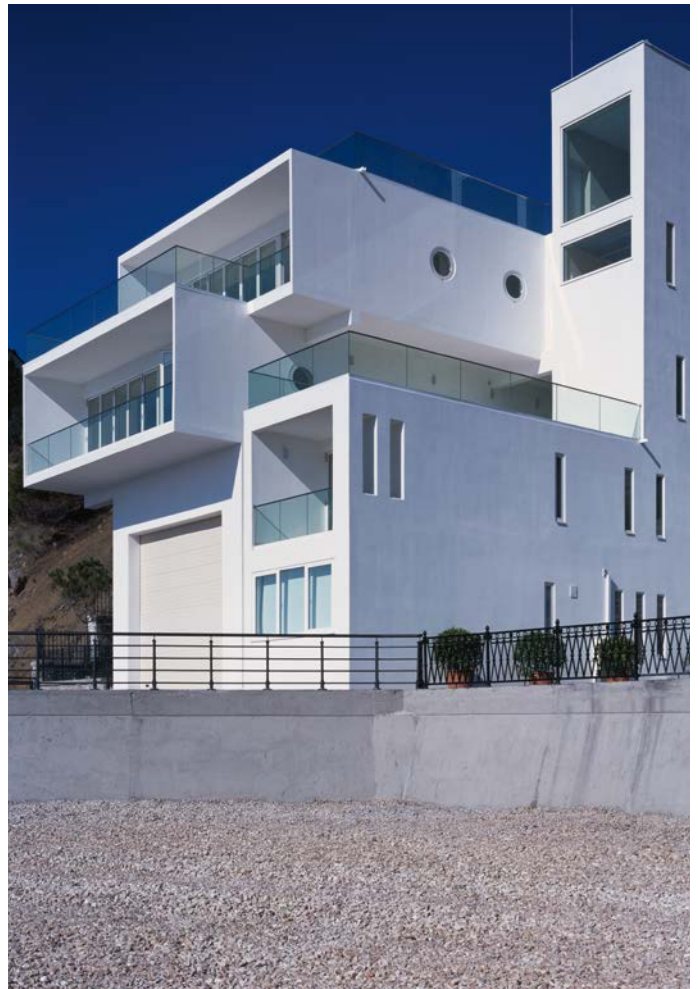
Available in a number of configurations using between 2 and 7 door leaves, you can specify a design where all the door leaves stack to the same side, or a design where some stack one way and some the other.

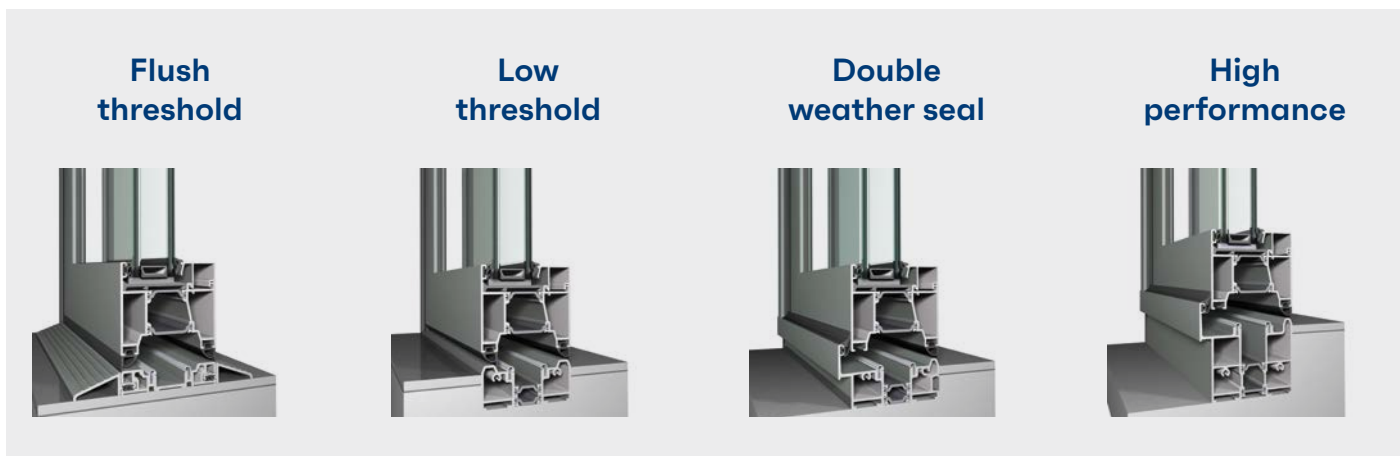
Choose whether you want the doors to open in or out, and remember that designs with a single traffic door enable you to slip quickly and easily into the garden, while leaving the other doors in place.



Innovative features and benefits

- Great thermal insulation down to $1.1 \text{ W/m}^2\text{K}$
- Glazing thickness up to 55 mm
- Security to British and European standards including Secured by Design
- Inward or outward opening
- Four threshold options
- Water resistance up to 600 Pa
- 2 to 7 door leaves
- Maximum height 2500 mm
- Maximum door leaf width 1200 mm
- High spec stainless steel rollers










Technical characteristics

Variants		Flush threshold	Low threshold	Double weather seal	High performance
Visible width / height	Frame / threshold	0-15 mm	9-30 mm	23-44 mm	23-74 mm
	Frame-vent section	100 mm			
	Vent-vent section	131 mm			
Overall system depth		68 mm			
Maximum element height		2500 mm			
Maximum vent weight		90 kg			
Rebate height		14 mm			
Glass thickness		12-55 mm			
Glazing method		dry glazing with EPDM or neutral silicones			
Thermal insulation		23 mm, 27.5 mm and 32 mm fibreglass reinforced polyamide strips			
HI variant		extra insulation foams			

Performances

Variants		Flush threshold	Low threshold	Double weather seal	High performance
Energy					
	Thermal insulation ⁽¹⁾ EN ISO 10077-2	Uf-value down to 1.8 W/m ² K ⁽¹⁾ , depending on the profile combination			
Comfort					
	Air-tightness, max. test pressure ⁽²⁾ EN 12207	Not applicable	Class 4	Class 4	Class 4
	Water-tightness ⁽³⁾ EN 12208	Not applicable	Class 5A (200 Pa)	Class 7A (300 Pa)	Up to Class 9a (600 Pa)
	Wind load resistance ⁽⁴⁾ EN 12211; EN 12210	Not applicable	C1/B3	C2/B3	C2/B3
Safety					
	Burglar resistance ⁽⁵⁾ ENV 1627 - ENV 1630	Not applicable	PAS24:2012	PAS24:2012	PAS24:2012

This table shows classes and values of performance, which can be achieved for specific configurations and opening types.

⁽¹⁾ The Ud value measures the heat flow. The lower the Ud value, the better the thermal performance of the door.

⁽²⁾ The air-tightness test measures the volume of air that would pass through a closed door at a certain air pressure.

⁽³⁾ The water-tightness test involves applying a uniform water spray at increasing air pressure until water penetrates the door.

⁽⁴⁾ The wind load resistance test is a measure of the profile's structural strength and involves applying increasing levels of air pressure to simulate wind force.

⁽⁵⁾ The burglar resistance is tested using static and dynamic loads, as well as simulated attempts to break in using specified tools. This variant requires specific burglar resistant accessories.

⁽⁶⁾ Please refer to Reynaers' CE passport for all technical data including size limitations.

⁽⁷⁾ Value for HI-variant.

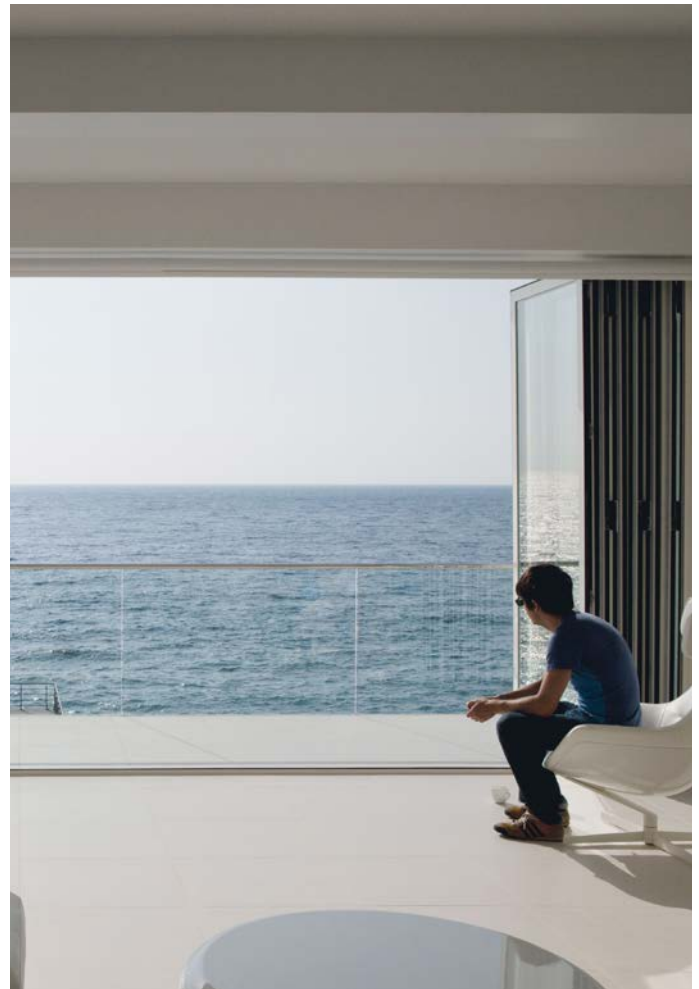
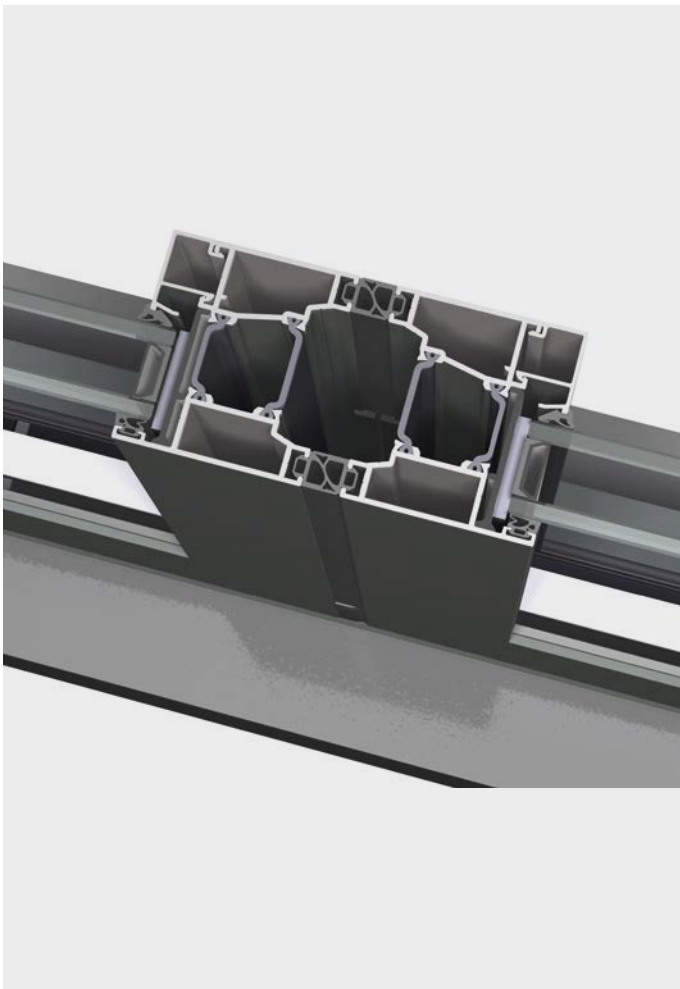
Threshold options

The CF 68 can be specified with any of our four different threshold options:

- High performance
- Double weather seal
- Low threshold
- Flush threshold

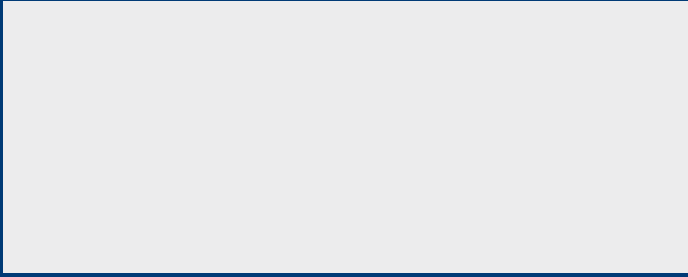
Each threshold option gives a trade-off between weather performance and ease of passage. The High Performance option offers the best air, wind and water performance but has the highest threshold step. The Double Weather Seal solution combines good weather resistance with a lower threshold.

The Low Threshold option can be set into the floor to meet the requirements of building regulations, and the Flush Threshold solution allows easy passage with no step at all, but this is at the expense of weather-proofing.





Partner details



Our partners

Reynaers at Home connects you to a network of carefully selected Partners who will guide you through your home transformation process, from the initial design and specification stages through to the supply and installation of your bespoke aluminium window and door systems.

For more information, please visit www.reynaersathome.co.uk

Why Reynaers?

For over 50 years, Reynaers Aluminium Ltd has been designing cutting-edge glazing solutions for some of the most iconic buildings in the world.

Engineered without compromise, our ranges of aluminium windows, doors and curtain wall systems have been specified time and again by the world's leading architects and construction companies.



Reynaers
Aluminium

Windows.
Doors.
Conservatories.

Together for better